

Guidance for Visitors during the COVID-19 Pandemic



We are delighted to be able to welcome visitors to the centre again. We are only able to do this safely by making sure that we follow physical distancing and infection control rules.

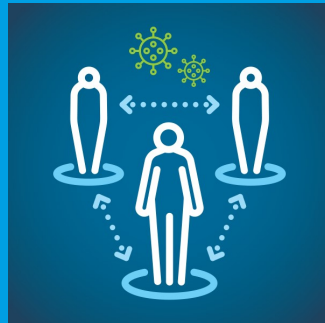
Please do not visit us if you any of the following symptoms of Coronavirus (Covid-19) or if you have been in contact with anyone that has any of these symptoms:



We understand that this is a very difficult time, but if you are displaying these symptoms, it is really important for everyone's safety that you stay at home.

What to expect when you get here

- 1. When you arrive at the Centre you will be asked to sanitize your hands, using the sanitizer available in the Reception Area.**
- 2. You will be given access to a locker by a member of staff and you will be able to keep your belongings there during your visit.**
- 3. You will be asked to wear a facemask, if you do not have your own we can provide one.**
- 4. You will be shown to the Outdoor Area where your visit is taking place and you will be supported by a member of the GSC Team.**
- 5. You will have to stay 2 meters apart from others, including the young person you are visiting.**



What do I need to know?

Only one household to visit at any time, with a maximum of two visitors.

Each visit will be limited to a maximum of 1 hour.

Always follow the physical distance rules by keeping 2 metres apart at all times.

You may be asked to wear a facemask during your visit.

The garden and outdoor sports pitch will be used for all visits (in the case of extreme weather conditions other arrangements may be made on the day).

Frequently Asked Questions

Q. Am I allowed to bring gifts?

Yes, however these should be handed to a Duty Officer when you arrive. Please note that we cannot accept wrapped gifts.

Q. Will refreshments be made available?

A. We're so sorry that right now because of Government Guidance, we can't offer visitors any food or drink other than access to water in our Reception area.

Q. Will there be toilets available?

Current Guidance from the Scottish Government means that we have to ask you to use your own toilet facilities before you visit. If you have any issues or concerns surrounding this please let a staff member know when arranging your visit.

Q. What items aren't allowed in the Centre?

As with all visits, to keep young people, staff and visitors safe, we cannot allow certain personal items, potentially dangerous items or illegal items into the centre, but you will have access to a locker to store personal belongings during your visit.

Prohibited items are:

Mobile phone, keys, money, wallet/purse, bank cards, alcohol & drugs, matches/lighters, tobacco products, E-cigarettes, cans, glass items, cameras, tools, crash helmets, aerosols, marker pens, chewing gum & plastic bags.



If you wish to visit, please contact us to make arrangements.

**Good Shepherd Centre
Greenock Road, Bishopton PA7 5PW**

Phone: 01505 864500

Fax: 01505 864501

Email: enquiries@goodshepherdcentre.org.uk